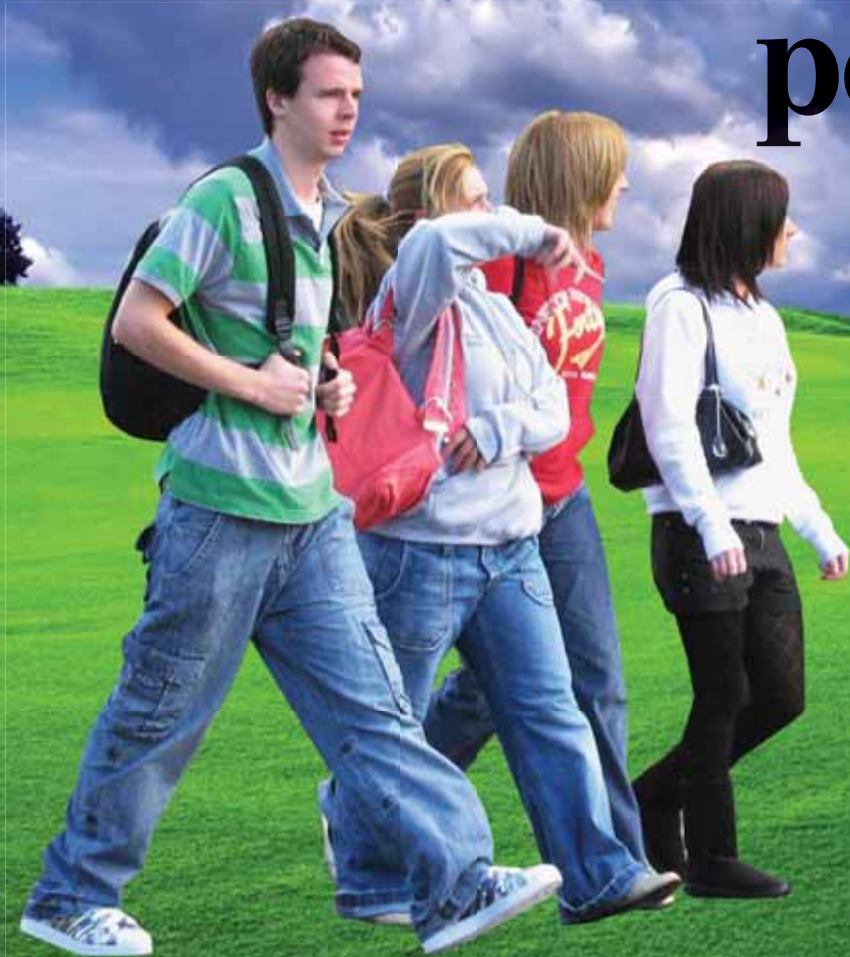


New

people, places,
& challenges

"It's a whole new world on campus. The old comfort zone of friends and teachers has gone and there's no-one there looking out for you. And even if you were around campus last year, there's new people and new challenges ahead. Time to take charge and get in control ..."



"Welcome to 2008"



**at the,
TARGET CENTRE"**

Holidays are over and the new year has begun. Hope you had a good break. Time to catch up with friends and start the new Uni year. Why not have a quick bite to eat after you stock up on all your stationery essentials at the Target Centre. It's right in the heart of the city where all the action is, see you there!



236 Bourke Street, Melbourne between Bourke & Little Bourke
In the Heart of the City